

CARING FOR YOUR DOG THIS SPRING & SUMMER!



Spring and summer bring a lot of opportunities for you to do different activities with your pet such as hiking, camping, and swimming, just to name a few. These activities could bring some health hazards that owners should be aware of.

Dehydration: One of the best ways to keep your pet hydrated is to provide fresh, clean, and cool water. Consider preparing low sodium chicken broth or yogurt ice cubes, or even introducing canned dog food (best when frozen in a kong) to increase the moisture content in your dogs diet.

Burned Pads: Asphalt on sidewalks and streets can heat to a temperature that could burn your dog's paws. To avoid scorched paws, walk your dog in the morning or late evening when the streets have cooled off. If you must walk your dog during the day, dog booties could protect his/her feet. Always put your hand down on the asphalt and hold it there for 30 seconds. If you must pull your hand away because it's too hot, then it's too hot for your dog to walk on

without hurting its paws.

Another problem for pads is roadside banks of icy snow have been repeatedly inundated with salt and other snow melting chemicals. The puddles of these glaciers are toxic and harsh on the pads. Remember to wash your dogs feet with soap after every walk and beware of thirsty dogs who want to lap up melted snow water. Make sure to always carry a water bottle and travel bowl for your pet.

Drinking unknown water from puddles, ponds, and lakes can be hazardous to your dog. The most common illness your dog can get is Leptospirosis. This can be contracted through bodily fluids or tissue either through a bite, ingestion of infected flesh, water sources, and food. Stagnant water being the most common. Lepto can cause very serious health problems or even death if not treated right away. Symptoms include vomiting, fever, trembling/shaking, lethargy, anorexia, tenderness of joints and muscles, and increased water intake. If you suspect your dog has lepto, take them to the vet right away. There are vaccines for lepto but they do not prevent all strains and can cause significant adverse reactions.

Heat Stroke: Heat stroke is a very serious risk to a dog's health which can be fatal. You can prevent heat stroke by restricting exercise to early morning or to late evening when it isn't as hot. Make sure they are well hydrated, provide air conditioning for them to relax, provide opportunities for

them to swim, cooling mats, and **never** leave your dog unattended in a car during summer heat!

Many dogs die annually in hot cars. Even if your windows are cracked or you park your car in the shade, heat can build up quickly in the summer, turning your car into an oven. Say for instance it is 95 degrees outside at noon, the temperature in your car may build up to 113 degrees in your car even if the windows are cracked. This is a recipe for disaster for your dog. If you must leave your dog in the car, you must leave the air conditioning on. Leaving your dog to die in a hot car isn't just a health risk for your pet, but may be cause for animal cruelty charges. Best advice is: Don't leave your pet in a hot car!!

Heartworm: Heartworm disease is transmitted to dogs and cats by a bite from a mosquito carrying the microscopic heartworm larvae. They have the appearance of thin spaghetti when they reach adulthood. Heartworms can grow to a length of 10-12 inches in adulthood. Undetected and untreated, adult heartworms infect the arteries of the heart and lungs. It is an extremely serious condition that could lead to heart failure in your dog. Some facts about heartworm:

*Pets can't catch heartworm from one another. Only the bite from an infected mosquito can transmit the parasite to your pet.

*It takes 7 months for the heartworm larvae transmitted by the mosquito to mature into adult heartworms.

*Heartworm disease is a silent killer in its early stages. Your pet

could be infected for months before you notice any symptoms. *Symptoms include: lethargy, anorexia, coughing (especially during physical exertion/exercise), reluctance to exercise or play, rapid breathing, and weight loss.

Because treatment of advanced heartworm is risky and difficult in dogs and non-existent in cats, prevention is the best protection you can provide for your pets. Chewable heartworm pills are available in daily and monthly doses. The most common brands include Heartgard and Tri-Heart Plus. Many pet owners opt for topical medications, which are applied directly to the pet's skin on a monthly basis. These drugs also help manage fleas, hookworms, mites, and roundworms, in addition to controlling heartworms. The most commonly used topical medications include Revolution and Advantage Multi. Always ask your vet what would be the best treatment for your pet.

Bee or Wasp Stings: Would you know what to do if your pet was stung? Although the vast majority of stings result in only temporary pain and swelling, just like humans, some pets are allergic to insect venom and could die from the reaction if emergency treatment does not get to them in time.

*How to spot an allergic reaction:
-Dramatic swelling of the muzzle

Ticks are parasitic arthropods that feed on the blood of their hosts. They are attracted to warmth and motion, often seeking out mammals – including dogs. Ticks tend to hide out in tall grass or plants in wooded areas waiting for prospective hosts. Once a host is found, the tick climbs on and attaches its mouth parts into the skin, beginning the blood meal. Once locked in place, the tick will not detach until its meal is complete. It may continue to feed for several hours to days, depending on the type of tick. On dogs, ticks often attach themselves in crevices and/or areas with little to no hair – typically in and around the ears, the areas where the insides of the legs meet the body, between the toes, and within skin

-fever or extremely low body temperature.

-wheezing or rapid breathing

-trembling and weakness

-pale gums

-vomiting

-diarrhea

-or collapse

Pets can die from shock in 10-20 minutes if not treated by a vet so you must act immediately!

- **First, give an antihistamine if you have one available and then rush your pet to the vet.**

- **On the way wrap your dog in a blanket and turn the heat on if it's cold weather.**

- **Put syrup or honey on the dogs gums to keep them conscious.**

- **If you hear gurgling noises, this may indicate your dogs lungs may be filling with fluid. In this case small dogs must be picked up by the back legs, and large dogs around the hips. Then hold the animal upside down for 10 seconds so the fluid can drain out.**

- **Also be prepared to perform artificial respiration if your pet stops breathing. You will need to wrap your hand around their muzzle to close their mouth, then blow two quick, hard breaths into the nose, and watch to see the chest rise. Continue giving 15-20 breaths a minute until your pet**

- starts breathing again or you arrive at the vet's office.**

If no allergic reaction occurs you still must remove the stinger otherwise it will continue to seep poison into your pet's system.

You must use something with a sharp edge such as a credit card, knife, or fingernail, to dislodge the stinger from the skin. Don't use tweezers or your finger, because they could force more venom into the wound.

Household remedies to use are a clean cloth in cold water and hold it against the skin and then apply a bag of ice or cold pack on top of the cloth. Apply the pack to the area for 10-30 minutes several times a day.

For stings inside the mouth, you can offer your pet ice cubes or a bowl of ice water. An alternative is to flush your pet's mouth with 1 tsp of baking soda mixed in a pint of water.

Another treatment for external stings is to make a poultice from 1 tbs baking soda and enough water to make a thick paste. Dab the poultice onto the wound, trimming a little hair to gain access. If your dog gets hives or starts itching, you can give them an oatmeal bath or cold water soak for 20 minutes twice a day.

*For mild to severe allergic reactions, use Benadryl, but always call your vet for the right dosage.

Ticks:

folds. Most species of ticks go through four life stages - eggs, larvae, nymphs, and adults. All stages beyond eggs will attach to a host for a blood meal (and must do so in order to mature). Depending on species, the life span of a tick can be several months to years, and female adults can lay hundreds to thousands of eggs at a time. The following types of ticks are among the most common seen in North America:

- Deer tick
- Brown dog tick
- Lone star tick
- American dog tick

The Dangers of Ticks:

Though they are known vectors of disease, not all ticks transmit disease – in fact, many ticks do not even carry diseases. However, the threat of disease is always present where ticks are concerned, and these risks should always be taken seriously. Most tick-borne diseases will take several hours to transmit to a host, so the sooner a tick is located and removed, the lower the risk of disease. The symptoms of most tick-borne diseases include fever and lethargy, though some can also cause weakness, lameness, joint swelling and/or anemia. Signs may take days, weeks or months to appear. Some ticks can cause a temporary condition called “tick paralysis,” which is manifested by a gradual onset of difficulty walking that may develop into paralysis. These signs typically begin to resolve after tick is removed. If you notice these or any other signs of illness in your dog, contact your veterinarian as soon as possible so that proper testing and necessary treatments can begin. The following are some of the most common tick-borne diseases:

- Lyme disease
- Ehrlichiosis
- Rocky Mountain spotted fever
- Anaplasmosis
- Babesiosis

Finding and Removing Ticks from Your Dog:

To search for ticks on your dog, run your hands all over the body, paying close attention to the ears neck, skin folds and other crevices. You may prefer to wear latex gloves. Closely examine any raised areas closely by parting the hair, making sure you are in a very well-lit area (you can even use a flashlight). Depending on species and life stage, a tick may be as small as a pencil point or as large as a lima bean (when engorged). If you live in an area where ticks are prevalent, or your dog spends a lot of time in high grasses or wooded areas, you should check for ticks once or twice a day. If you find an embedded tick, be sure to remove it promptly. Here’s how:

1. Wear latex gloves to protect yourself. Use a pair of tweezers or a specially-designed tick removal tool to grasp the tick at the point of attachment. This should be done as close to the skin as possible.
2. Be very careful **not** to squeeze the body of the tick, as this may cause bacteria and disease containing materials to be injected into the site.
3. Pull the tick straight out from the skin slowly and steadily (without twisting or turning). Some of your dog’s skin may come off with the tick, but this is normal. If bleeding occurs, apply light pressure to the area.
4. Once removed, the tick should be handled carefully. While some people prefer to flush ticks

down the toilet, saving the tick for further identification is a good idea. Place the tick in a small airtight container (like a pill vial or jar). You may wish to add some rubbing alcohol to the container. Label the container with the date and store in case future illness occurs, as identification may become necessary.

5. If part of the tick's head still appears to be embedded, use the tweezers to gently pull it out. If some of the head cannot be removed, do not become alarmed. This should fall off eventually and rarely causes complications.
6. After tick removal, clean your dog's skin at the bite area with mild soap and water. Watch this spot for several days in case of further irritation or infection. If the area does not clear up in a few days, contact your veterinarian.

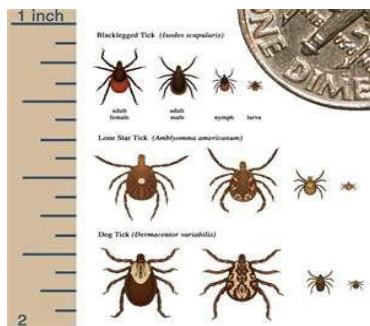
Tick Prevention for Dogs:

The best way to protect your dog from the hazards of ticks is to keep them from attaching to your dog in the first place. As stated earlier, routine checks should be done to search for ticks on your dog. Finding them before they attach is helpful, but this is not the most accurate method of prevention. To reduce the number of ticks hiding out in your yard, keep grass mowed and plants neatly trimmed. You may also choose to treat outdoor areas with pesticides, but be sure to use a substance that is safe for dogs and preferably environmentally-friendly.

One of the most effective ways to keep ticks off your dog is to directly apply a tick prevention product specifically designed for dogs.

Topical products like Frontline, Revolution, Advantix, and bioSpot are designed to be applied monthly to prevent ticks.

Just ask your veterinarian what the best product for your pet would be.



What a tick looks like:

Fleas:

Dogs often get infested with fleas through contact with other animals or contact with fleas in the environment. The flea's bite can cause itching for the host but for a sensitive or flea-allergic animal, this itching can be quite severe and leads to hair loss, inflammation and secondary skin infections. Some pets that are

hypersensitive to the flea's saliva will itch all over from the bite of even one flea.

Fleas are dark copper colored and about the size of the head of a pen. Fleas dislike light so they will be found anywhere there is fur. Checking on your pet's belly and inner legs is the best way to spot them. Also check for flea dirt. Flea dirt looks like dark specs of pepper scattered across the skin. This dirt is actually the flea's feces. If you spot this then most likely your pet has fleas.

The adult female flea can live on your pet for up to a couple weeks. During this time period she will feed off their blood 2-3 times per day and lay 20-30 eggs per day. These eggs fall off your pet into the yard, bedding, carpet, and

wherever else your pet spends time. These eggs then proceed to develop where they have landed. These eggs and larvae can live for weeks until the optimal environmental conditions are right and there is a host near by that they can jump onto.

Fleas can cause anemia if severely infested and also give your pet tapeworms if ingested. So it is very important to keep your pet protected all year round with a topical medication such as Frontline. Again always ask your veterinarian what the best treatment options are.

If you have found fleas on your pet and treat them with the proper medication, you must also remember to clean your house thoroughly. This means

everywhere your pet has been. Make sure to vacuum daily, clean all your bedding with soap and water, and if needed you may need to “bomb” your house. These foggers can be found at your local pet or department stores. In this case you and your pet need to be out of the house for at least a day. For any questions please ask your veterinarian.

What a flea looks like:



*In case of an emergency call:

**Animal Emergency and Critical
Care Center of Toledo Inc
2785 W Central Ave.
Toledo, OH 43606
419-473-0328**

OR

Call your current vet!

Informative Websites

www.aspca.org

www.petmd.com

www.avma.org

TOXIC BLUE-GREEN ALGAE CAN BE DEADLY TO YOUR DOG

- Whole Dog Journal Blog Article

Toxic Blue-Green Algae can be Deadly to Your Dog

It's that time of year again – when news reports start coming out of dogs dying after swimming in or drinking from ponds, lakes, and reservoirs polluted with toxic blue-green algae. The component of the algae that produces toxins is called cyanobacteria.

Three dog deaths in July have been attributed to toxic algae at Grand Lake St. Marys in Ohio, but the problem can occur anywhere. In past years, reports of toxic algae blooms have ranged from California to Maine, and Canada to Florida, as well as the UK.

Blue-green algae thrive in warm, shallow water. While algae may be present throughout the year, it is only when there is an extensive “bloom” that problems occur. Most blooms occur in late summer or early fall, but they can occur earlier as well, particularly when the weather is unusually warm and dry. Toxic algae can be blue, bright green, brown, or red.

Signs of toxicity in dogs may start with lethargy, followed by vomiting and diarrhea. Tremors and seizures can occur almost immediately. Additional signs range from excess salivation, skin irritation, and pale gums to severe respiratory, circulatory, or neurological disorders. Convulsions and death can occur as little as four hours after exposure. Treatment may include fluids to prevent dehydration, diazepam (Valium) to control seizures, atropine to counteract the poison, charcoal to absorb toxins from the stomach, and adrenaline to help counteract respiratory failure.

Prevention is the best course of action. Keep your dogs away from stagnant water in warm weather, particularly if you notice any of the following:

- The water looks like green paint or pea soup, or is cloudy with a green, yellow, or blue-green hue.
- It smells swampy or musty.
- You see what looks like foam, scum, or mats on top of the water.

If contact occurs, prevent your dog from licking his feet or coat, and wash him off thoroughly with clean water as soon as possible. If you suspect problems, contact your vet immediately. If your dog becomes ill, be sure to notify authorities so that warning signs can be posted to protect other pets and people.

Source: <http://www.whole-dog-journal.com/blog/Harmful-Dog-Toxins-20058-1.html>

POISONOUS PLANTS AND FOODS



*Indicates that a substance is especially dangerous and can be fatal!

Aloe Vera
Almonds*
Amaryllis bulb
*Apple (seeds)
Apricot (pit)*
Arrowhead
Asparagus
FernAvocado*
Autumn Crocus*
Azalea
BanberryBegonia*
Bird of Paradise
Black Locust
Black Walnut
Bleeding Heart*
Boston Ivy
Box Wood
Bracken Fern
Buckeye
Buttercup (Ranunculus)
Caffeine
Caladium*
California Poppy
Calla Lily*
Carnation
Caster Bean*
Ceriman

Cherry (seeds, wilting leaves, and pit)
Chinese Evergreen
Chives
Choke Cherry*
Christmas Rose
Chrysanthemum
Clematis
Corn Plant
Crocus
Croton
Crown of Thorns
Crown Vetch
Cyclamen
Daffodil
Delphinium
Devil's Ivy
Dicentra
Dieffenbachia
Donkey Tale
Dumb Cane*
Dutchman's Breeches
Easter Lily
Elder Berry
Elephant Ears
English Ivy
Eucalyptus
Fiddle-leaf Fig
Florida Beauty
Four O'Clock
Fox Glove
Fox Tail
Fruit Salad Plant
German Ivy
Gladiola
Hemlock
Holly
Honeysuckle
Hurricane Plant
Hyacinth
Hydrangea*
Iris
Ivy
Jack in the Pulpit*
Japanese Yew
Jerusalem Cherry
Jimson Weed*
Jonquil
Kalanchoe*

Lamb's Quarter
Lantana*
Larkspur
LaurelLily
Lily of the Valley
Lobelia
Locoweed
Lords-and-Ladies
Lupine
Marigold (Marsh Marigold)
Marijuana*
Mayapple
Mexican Breadfruit
Milkweed*
Mistletoe*
Monkshood*
Morning Glory*
Mother-in-law Plant
Mother-in-law's Tongue
Mountain Laurel
Mushrooms
Narcissus
Nephthytis
Nightshade
Oak Tree (budsand acorns)
Oleander
Onion
Peace Lily
Peach (wilting leavesand pits)
Pencil Tree*
Philodendron*
Pig Weed
Poinsettia
Poison Ivy
Poison Hemlock
Poison Oak
Poison Sumac
Poppy
Potato (all green parts)
Pothos
Precatory Bean
Rhododendrun
Rhubarb
Ribbon Cactus
Rubber Tree
Sago Palm
Schefflera
Shamrock Plant*
Snake Plant

Snow on the Mountain
 Sorghum
 Star of Bethlehem
 Stinging Nettle
 Stink Weed
 Swiss Cheese Plant
 Taro Vine
 Toadstools
 Tobacco
 Tomato Plant (entire plant except
 ripe fruit)
 Umbrella Tree
 Water Hemlock
 Weeping Fig
 Wisteria
 Yew*

FOODS TO AVOID!

Chocolate-It's commonly known by dog owners as being toxic. The reason chocolate is dangerous is because it contains theobromine, which is a cardiac stimulant. Consuming large amounts of chocolate will cause a dog to become extremely sick, as the overdose of theobromine will cause the heart to beat irregularly. Chocolate can also cause extreme excitement in your dog, as well as hyperactivity (due to the high caffeine content). Death by heart failure is very common in dogs that have eaten a significant amount of chocolate.

Onions and Garlic-They both contain thiosulphate, which is extremely toxic to dogs. Thiosulphate can cause hemolytic anemia, which is a very serious condition. Their red blood cells burst during circulation, which will show up in your dog's vomit or urine. Symptoms include weakness, listlessness, vomiting, and irregular urine.

Macadamia Nuts-Have only recently been discovered as toxic. The specific element in macadamia nuts that is toxic for animals is unknown. Several studies have shown it is a very dangerous food for dogs. Ingestion of macadamia nuts can cause swollen joints, labored breathing, and muscle tremors. Most dogs only need to ingest a few nuts to have a negative reaction.

Fat Trimmings- Small amounts of fat are needed to sustain your dogs overall health. Large amounts of fat, especially in a single meal, can be dangerous for your dog. Ingestion of a single high-fat meal can cause pancreatitis, a condition that is extremely dangerous if not treated.

Grapes & Raisins-They can cause irreversible damage to the kidneys, possibly causing death. Ingesting 4-5 grapes or raisins can be poisonous to a 20 pound dog. Signs of toxicity include vomiting, loss of appetite, diarrhea, abdominal pain, decreased urine production (possibly leading to lack of urine production), weakness, and drunken gait. Onset of signs typically occur within 24 hours but can start after a few hours of consumption.

Xylitol- this is a sugar free sweetener usually found in chewing gum and candy. In dogs, it stimulates the pancreas to secrete insulin, resulting in hypoglycemia (low blood sugar). It can also cause severe liver damage. As few as 2 pieces of

gum can cause hypoglycemia to a 20 pound dog and a whole pack of gum can cause liver damage. Signs of toxicity can occur within 30-60 minutes and include weakness, drunken gait, collapse and seizures.

Fruit Pits and Seed- Apple seeds, cherry pits, peach pits, and plum pits contain the toxin cyanide. Signs of cyanide poisoning include vomiting, heavy breathing, apnea tachycardia, cardiac arrhythmias, coma, and skin irritaion.

Mushrooms-effect the nervous system, kidneys, and heart

Nutmeg-can cause seizures and central nervous system damage

Raw Eggs- contain an enzyme called avidin, which decreases the absorption of biotin (a B vitamin). This can lead to skin and coat problems. They can also contain Salmonella.

Raw Fish-can result in a thiamine (a B vitamin) deficiency leading to a loss of appetite, seizures, and in severe cases death. More common if raw fish is fed regularly.

Yeast Dough-can expand and produce gas in the digestive system, causing pain and possible rupture of the stomach and intestines.

***If you suspect or know if your dog has eaten something toxic, call a pet poison hot line such as the ASPCA (1-888-426-4435), the Pet Poison Hot Line (1-800-213-6180), or your local emergency vet.**